



VIKING CHAINS INC.

VC CHAINS CORPORATION

## BAGASSE CARRIER CHAINS

Viking Chains offer several sizes of straight and offset side bar construction chain for this application with different capacity ranges to meet all bagasse conveying requirements.

The main characteristics are: heat-treated side bars, alloy steel pins heat-treated and plated for maximum wear resistance, carburized bushings and rollers and tight press fits for maximum fatigue resistance. For highly corrosive applications greasable pins or special stainless steel pins, bushings and rollers can be supplied on request.

All chains are supplied with A-42 attachments and 2C flight wing and they are interchangeable in all respects with corresponding high quality products supplied to the Sugar Cane Industry.

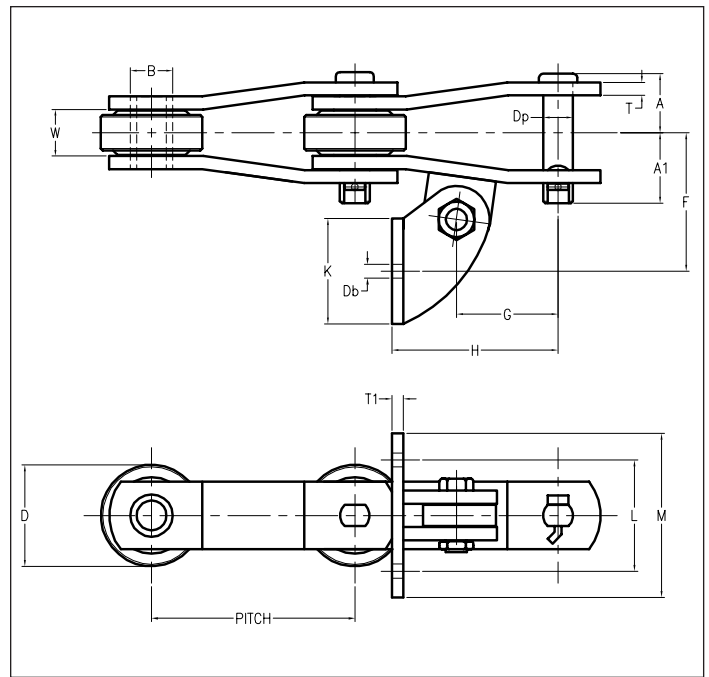
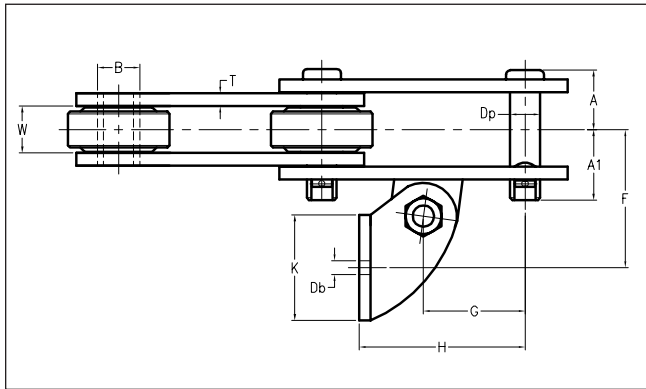




VIKING CHAINS INC.

VC CHAINS CORPORATION

# BAGASSE CARRIER CHAINS



+ Bolt diameter - (hole size 1/16" larger)

VIKING CHAIN PIN	PITCH P	AVG. ULT. STRENGTH	MAX WORK LD	CHAIN STYLE	Dp	W	T	D	B	K	Db+	G	H	F	T1	L	M
VC9060	6.000	60,000	6,350	1	0.75	1.50	0.38	2.75	1.13	2.00	0.50	3.00	5.63	3.50	0.31	3.50	5.00
VC9061	6.000	85,000	6,350	1	0.75	1.50	0.38	2.75	1.13	2.00	0.50	3.00	5.63	3.50	0.31	3.50	5.00
S1131	6.000	65,000	6,050	1	0.75	1.56	0.38	3.00	1.13	2.00	0.50	3.00	5.63	3.65	0.31	3.50	5.00
VC2198A	6.000	100,000	7,800	1	0.88	1.56	0.50	2.75	1.25	2.00	0.50	3.00	5.63	3.97	0.31	3.50	5.00
VC2800A	8.000	100,000	9,800	1	1.00	1.81	0.50	3.50	1.50	2.00	0.50	4.00	6.63	3.88	0.31	3.50	5.00
VC1604	6.000	20,000	2,700	2	0.50	1.06	0.25	3.00	0.72	2.00	0.50	3.00	5.63	3.12	0.31	3.50	5.00
VC2184	6.000	58,000	6,500	2	0.88	1.38	0.38	3.00	0.72	2.00	0.50	3.00	5.63	3.62	0.31	3.50	5.00
VC9184	6.000	140,000	8,300	2	0.94	1.50	0.50	3.00	1.25	2.00	0.50	3.00	5.63	3.88	0.31	3.50	5.00
VC3130	6.000	45,000	5,200	2	0.75	1.22	0.38	3.50	1.13	2.00	0.50	3.00	5.63	3.44	0.31	3.50	5.00

Tabular dimensions and design are subject to change. Verification is recommended as Viking Chains is continuously improving it's products. Dimensions are in inches, loads in lbs.