



VIKING CHAINS INC.

VC CHAINS CORPORATION

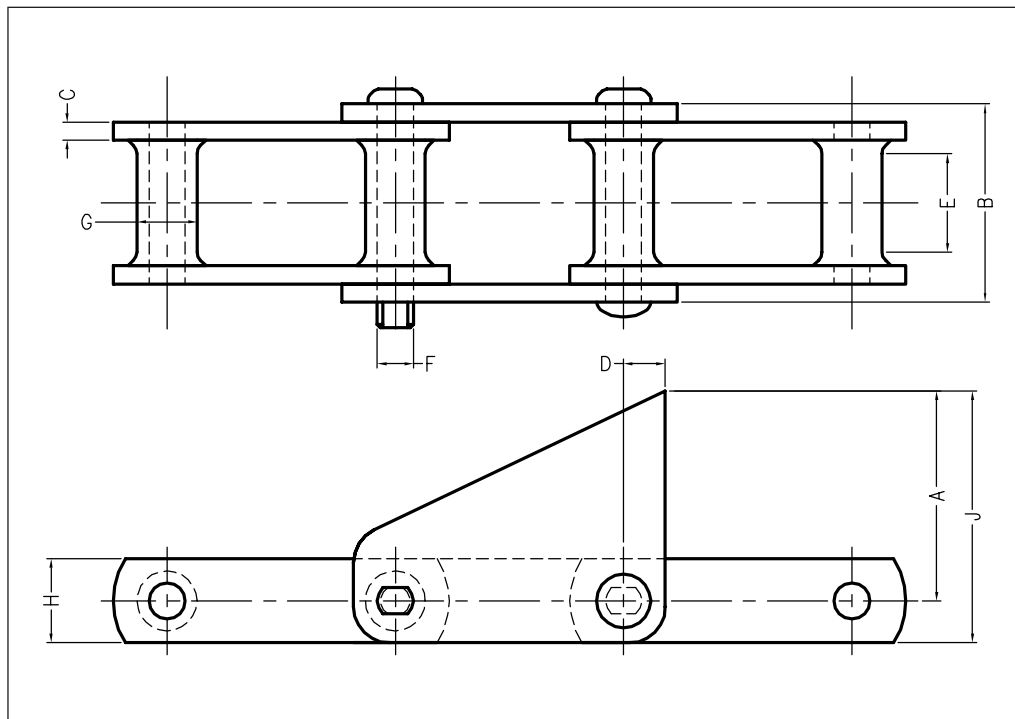
# CANE FEED & WASHING TABLE CHAINS

Chains in Cane Feed and Washing Table conveyors are exposed to a highly corrosive, abrasive environment and heavy shock loads. Viking Chains offer several different options to meet these requirements:

## Combination Chains

These chains have cast link and heat-treated steel side bars and rivets, offering excellent abrasion resistance in moderate speed applications. Specially designed elliptical barrel (with extra material added to the leading face) eliminates severe grinding contact with sprocket tooth face, thus extending the life of the chain.

These chains are available with most standard attachments.



**S1 ATTACHMENT**

VIKING CHAIN NO.	PITCH	MAXIMUM WORK LOAD	AVERAGE ULTIMATE STRENGTH	PIN DIAMETER F	SIDEBAR DEPTH H	SPROCKET FACE E	BARREL DIAMETER G	A	J	SIDEBAR THICKNESS C	B
C131	3.07	3880	32,400	0.62	1.50	1.13	1.25	3.25	4.00	0.38	2.81
C102B	4.00	5400	32,400	0.62	1.50	1.75	1.00	3.75	4.50	0.38	3.75
C111	4.76	6,000	36,000	0.75	1.75	2.25	1.44	4.38	5.25	.038	4.18
C110	6.00	5380	32,400	0.62	1.50	1.75	1.25	4.25	5.00	0.38	3.69
C132	6.05	11,250	67,500	1.00	2.00	2.88	1.72	5.00	6.00	0.50	5.44

Tabular dimensions and design are subject to change. Verification is recommended as Viking Chains is continuously improving it's products. Dimensions are in inches, loads in lbs.



VIKING CHAINS INC.

VC CHAINS CORPORATION

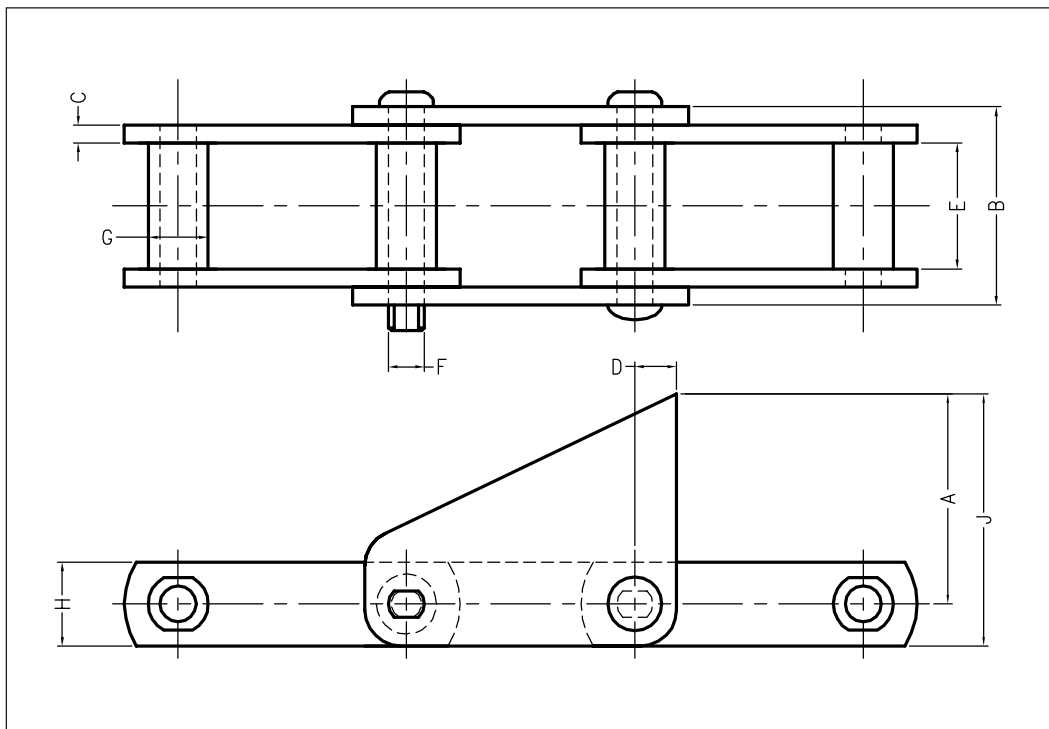
# CANE FEED & WASHING TABLE CHAINS

## Engineered Steel Rollerless Chain

For extremely gritty and abrasive applications with higher loads, Viking can offer Engineered Steel Chains.

All steel parts are precision machined and heat-treated to ensure maximum strength and wear resistance.

These chains are available with most standard attachments.



**S1 ATTACHMENT**

VIKING CHAIN NO.	PITCH	MAXIMUM WORK LOAD	AVERAGE ULTIMATE STRENGTH	PIN DIAMETER F	SIDEBAR DEPTH H	SPROCKET FACE E	BUSHING DIAMETER G	A	J	SIDEBAR THICKNESS C	B
SS188	2.609	2750	25,000	0.50	1.50	1.06	0.88	2.62	3.56	0.25	2.12
SS131	3.07	4,500	40,000	0.62	1.50	1.13	1.25	3.25	4.00	0.38	2.88
SS102B	4.00	6,300	40,000	0.62	1.50	1.75	1.00	3.75	4.50	0.38	3.72
SS111	4.76	8,500	50,000	0.75	1.75	2.25	1.44	4.38	5.25	0.38	4.19
SS110	6.00	6,300	40,000	0.62	1.50	1.75	1.25	4.25	5.00	0.38	3.69

Tabular dimensions and design are subject to change. Verification is recommended as Viking Chains is continuously improving it's products. Dimensions are in inches, loads in lbs.



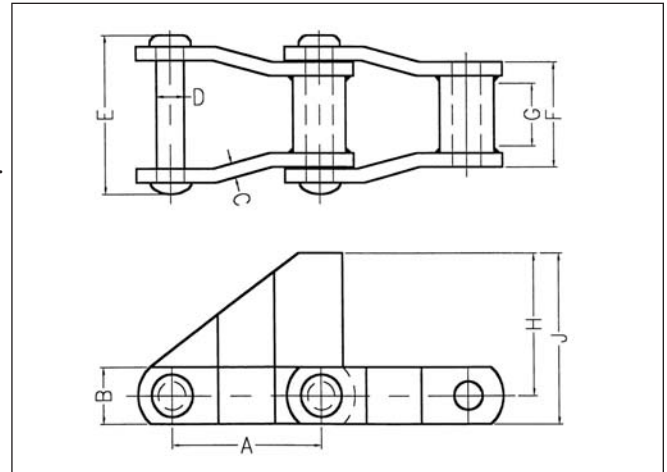
VIKING CHAINS INC.

VC CHAINS CORPORATION

# CANE FEED & WASHING TABLE CHAINS

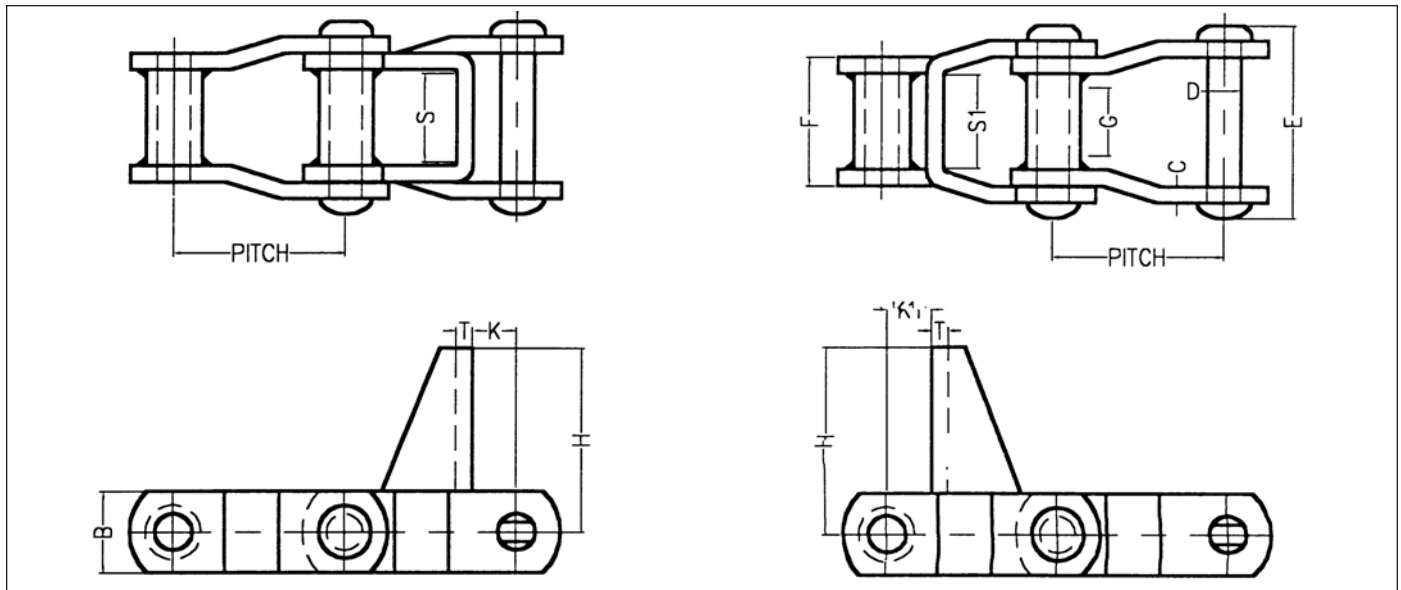
## Welded Steel Chains

Welded steel mill chains are recommended in applications where greater strength and shock load resistance are required. Fully heat-treated links and barrels and tight press fits make these chains wear and fatigue resistant. They fit on the same sprockets as comparable cast or combination chains and provide low maintenance. Most attachments can be welded or repaired in the field. These chains are available with most standard attachments.



### S1 ATTACHMENT

VIKING CHAIN NO.	PITCH A	AVG. ULT. STRENGTH	B	C	D	E	F	G	H	J
WH-124	4.000	50,400	1.50	0.38	0.75	4.25	2.82	1.50	3.75	4.50
WH-111	4.760	50,400	1.75	0.38	0.75	4.82	3.28	1.88	4.25	5.00
WH-132	6.050	85,500	2.00	0.50	1.00	6.25	4.22	3.12	5.00	6.00



### H1 ATTACHMENT

### H4 ATTACHMENT

VIKING CHAIN NO.	PITCH A	AVG. ULT. STRENGTH	B	C	D	E	F	G	H	K	K1	S	S1	T
WH-78	2.609	29,800	1.25	0.25	0.50	3.00	2.00	1.00	4.56	0.50	0.50	1.50	1.50	0.25
WH-82	3.075	32,700	1.25	0.25	0.56	3.12	2.25	1.37	4.62	0.50	0.62	1.86	1.75	.025

Tabular dimensions and design are subject to change. Verification is recommended as Viking Chains is continuously improving its products. Dimensions are in inches, loads in lbs.



VIKING CHAINS INC.

VC CHAINS CORPORATION

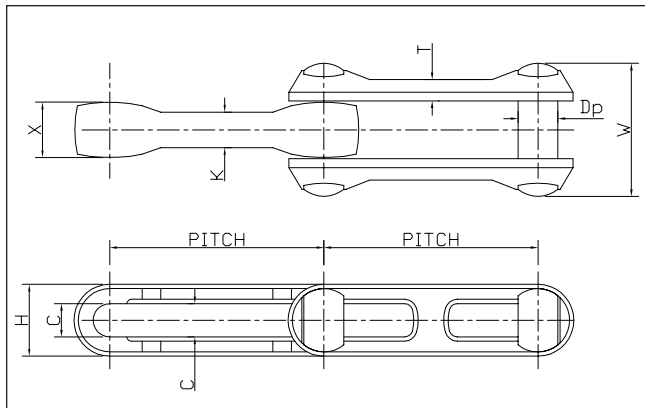
# CANE FEED & WASHING TABLE CHAINS

## Rivetless Drop Forged Chains

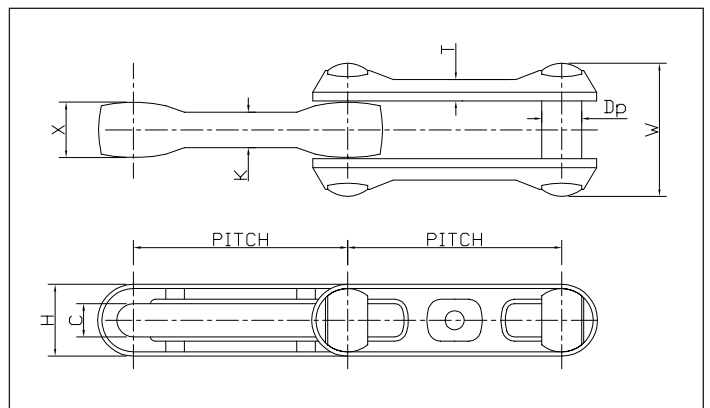
These chains have high strength, simple construction and do not require any tools for assembly. The open design between pin and center link prevent the conveying material from packing the joints. All parts are heat-treated and "T" pins ensure positive locking action in the sidebars. When the chain is worn, the pin can be reversed to restore the original



pitch and the complete chain can be turned over to provide a new sliding surface.



**REGULAR TYPE**



**X TYPE**

VIKING CHAIN NO.	PITCH	H	Dp	W	X	K	T	C	AVG. ULT. STRENGTH
X-348	3.031	1.06	0.500	1.750	0.750	0.520	0.410	0.562	24,000
X-458	4.031	1.44	0.625	2.188	1.020	0.660	0.480	0.688	48,000
468HT	4.031	1.88	0.750	3.310	1.625	1.162	0.450	0.875	70,000
678HT	6.031	2.00	0.875	3.030	1.312	0.840	0.720	1.000	85,000
X-678	6.031	2.00	0.875	3.030	1.312	0.840	0.720	1.000	85,000
698HT	6.031	2.69	1.125	3.750	1.562	1.031	0.593	1.250	135,500
998HT	9.031	2.52	1.125	3.875	1.562	1.000	0.325	1.125	135,500

Tabular dimensions and design are subject to change. Verification is recommended as Viking Chains is continuously improving it's products. Dimensions are in inches, loads in lbs.



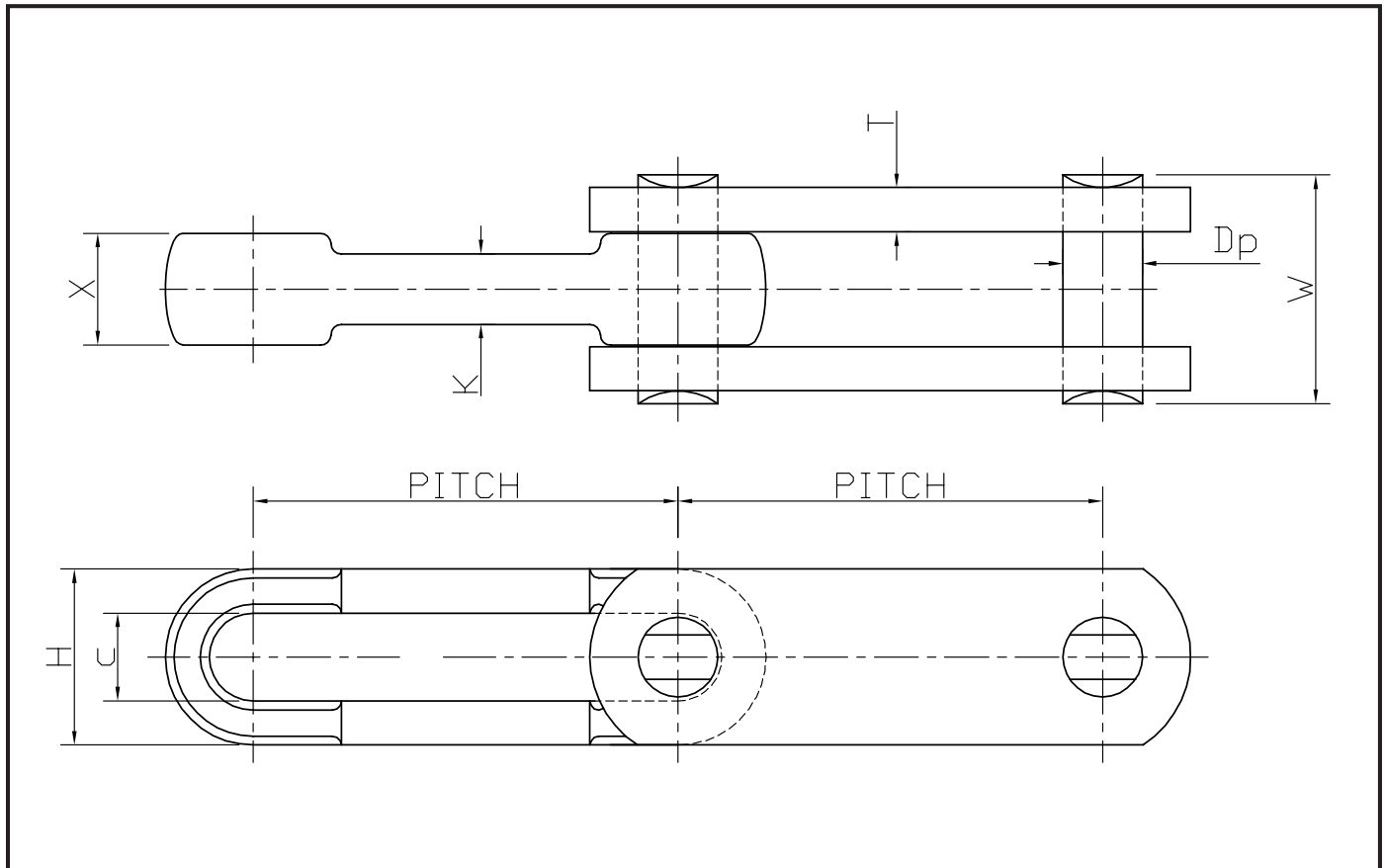
VIKING CHAINS INC.

VC CHAINS CORPORATION

# CANE FEED & WASHING TABLE CHAINS

## Steel Barloop Chains

S Series chains have steel side bars with induction hardened edges, induction hardened pins and thru-hardened center links for greater abrasion and wear resistance. These chains fit on the Regular Drop Forged Chain sprockets.



### S TYPE

VIKING CHAIN NO.	PITCH	H	DP	W	X	K	T	C	AVG. ULT. STRENGTH
S-468	4.031	1.88	0.750	2.938	1.625	1.125	0.375	0.875	68,000
S-678	6.031	2.00	0.875	2.750	1.312	0.813	0.500	1.00	72,000
S-698	6.031	2.69	1.125	3.250	1.562	1.000	0.500	1.250	135,500

Tabular dimensions and design are subject to change. Verification is recommended as Viking Chains is continuously improving it's products. Dimensions are in inches, loads in lbs.