



**VIKING CHAINS INC.**

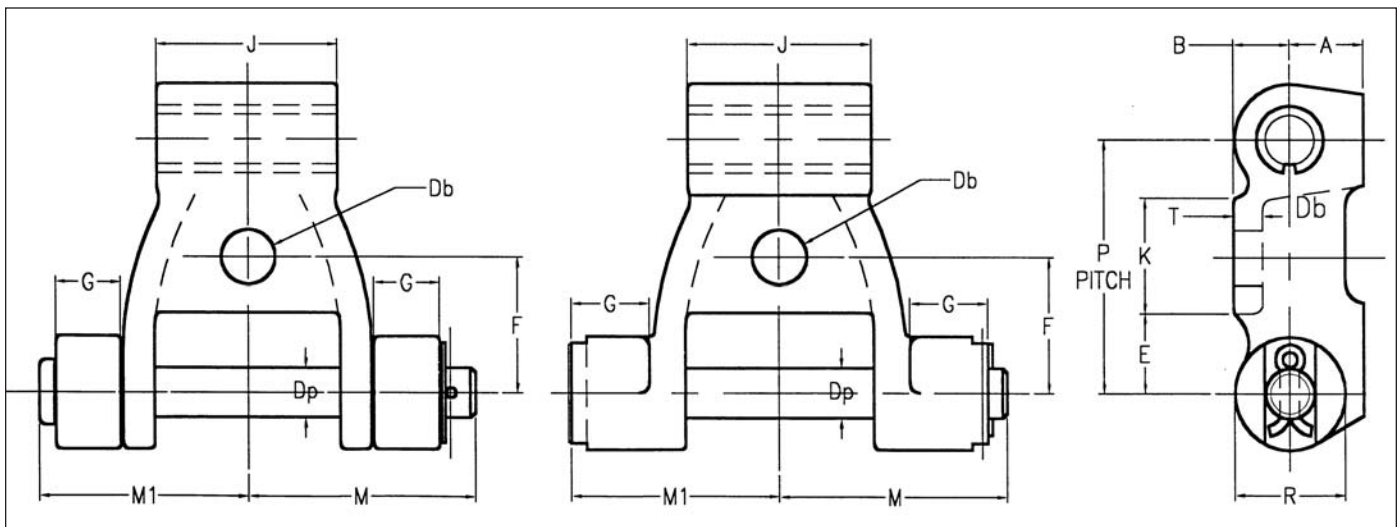
**VC CHAINS CORPORATION**

## INTERMEDIATE CARRIER CHAINS

Viking Chains offer two basic designs for this application:

- ▼ 900 Series Pintle Chain with special cast links (promal), hardened steel bushings keyed into the barrel and "T" head heat-treated pins locked in the links cast lugs. Chain can be supplied with heat-treated stainless steel pins and bushings or as SS907-E51 chain with all stainless steel parts.
- ▼ 900R series chain has outboard rollers to engage the double sprocket teeth to minimize the scrubbing action. It has heat-treated stainless steel pins, bushings and rollers.

All wearing parts in these chains are easily replaceable. These chains are interchangeable in all respects with corresponding high quality products supplied to the Sugar Cane Industry.



**900R SERIES**

**900 SERIES**

VIKING CHAIN PIN	PITCH P	AVG. ULT. STRENGTH	MAX WORK LD	Dp	R	K	M1	M	A	B	F	Db	G	E	K	T
907-E51	3.170	32,5000	5,000	0.63	1.44	2.31	2.69	2.94	1.66	0.72	1.69	0.69	1.12	0.69	1.31	0.36
SS907-E51	3.107	32,500	5,000	0.63	1.44	2.31	2.69	2.94	1.66	0.72	1.69	0.69	1.12	0.69	1.31	0.36
R907-E51	3.170	32,500	5,000	0.63	1.40	2.31	2.94	3.06	1.66	0.72	1.69	0.69	1.06	0.69	1.31	0.36

Tabular dimensions and design are subject to change. Verification is recommended as Viking Chains is continuously improving it's products. Dimensions are in inches, loads in lbs.